



**MOVE INN ESTATES**  
MAKING THE RIGHT MOVE



**Cranford Drive**

Hayes, Middlesex, UB3 4LA

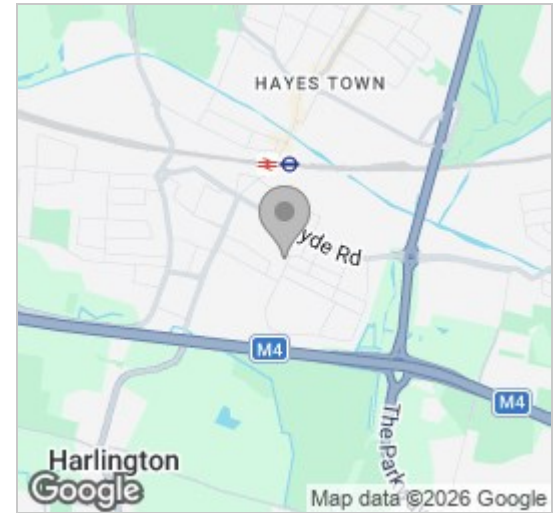
£1,300 PCM



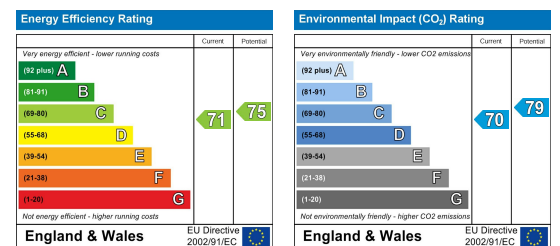
## Floor Plan



## Area Map



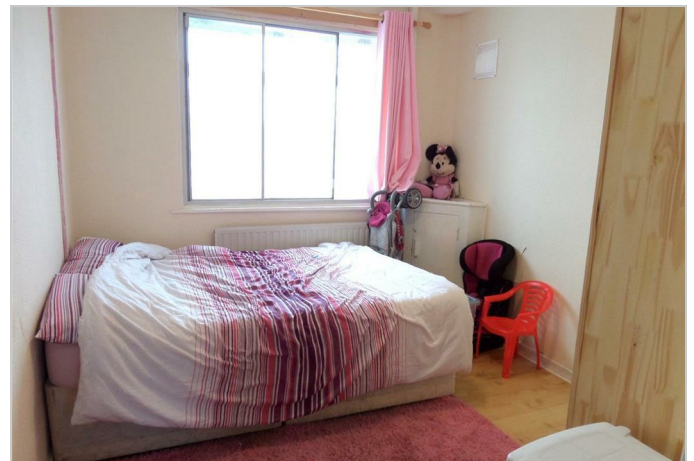
## Energy Efficiency Graph



## Viewing

Please contact our Move Inn Estates - Sales Office on 0208 574 4966 if you wish to arrange a viewing appointment for this property or require further information.

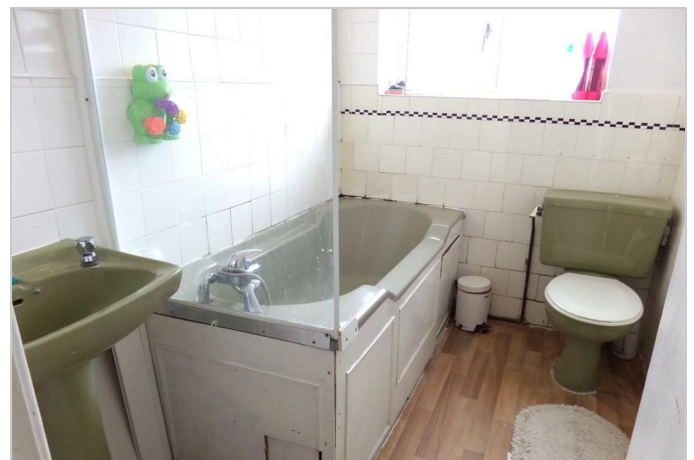
- Large living & storage space
- Good condition
- Two double bedrooms
- Located within a prime location
- First floor flat
- Private rear garden



Delighted to announce a newly renovated two bedroom flat will be coming available shortly. Truly spectacular and in immaculate condition, two double bedrooms first-floor maisonette is situated in a quiet residential location. The property comprises of a spacious lounge, modern fitted kitchen with appliances, two double bedrooms, 3 piece bath suite & private rear garden.

The properties further benefits include double glazing and gas central heating, car parking, great transport links into and surrounding areas of Hayes & Harlington. Local amenities include shops, supermarkets & banks within minutes walk. Highly rated by OFSTED schools for various age ranges within close distance also. The nearest station is Hayes & Harlington with great links into Central London and Reading (Crossrail), road links include M4, M25, Bath Road, Heathrow Airport.

Ideal for working professionals, Part housing benefit applicants accepted subject to a guarantor.



These particulars, whilst believed to be accurate are set out as a general outline only for guidance and do not constitute any part of an offer or contract. Intending purchasers should not rely on them as statements of representation of fact, but must satisfy themselves by inspection or otherwise as to their accuracy. No person in this firm's employment has the authority to make or give any representation or warranty in respect of the property.